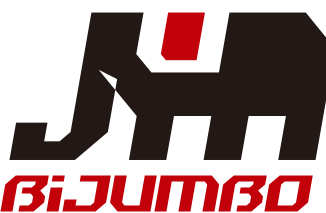




COOLRUNBIKE CO., LTD.

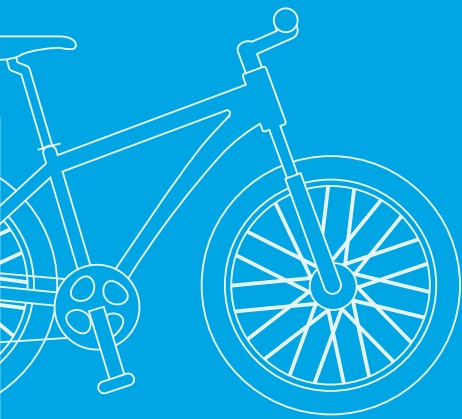
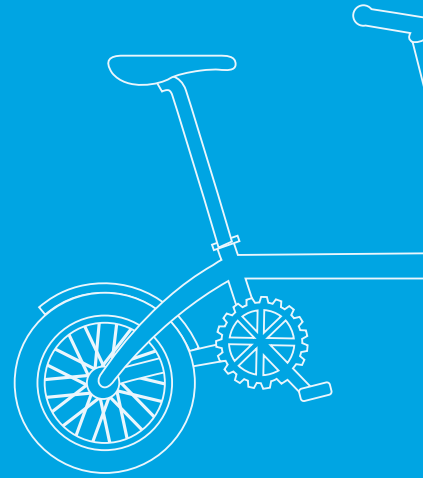
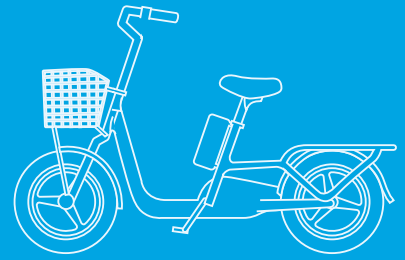
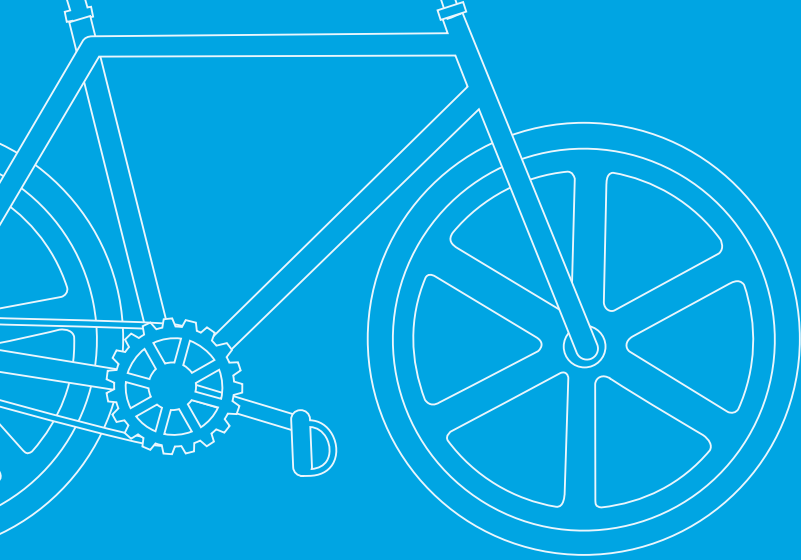


Anyili INDUSTRY CO., LTD.

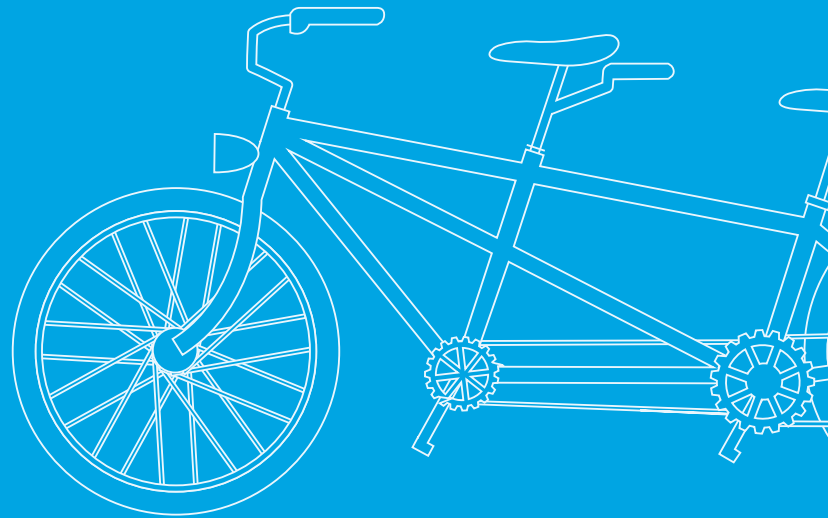


No.46, Tianyang Ln., Lukang Township, Changhua County 505, Taiwan  
TEL. +886-4-777-1179 FAX. +886-4-777-1281 EMAIL. bijumbo.bike@gmail.com

<http://bijumbo.weebly.com/>



**JH**  
**BiJUMBO**



# Mechanical Disc Brake

## FEATURES

- **Dual Piston** - Keep rotor in central, extend the life time of rotor.
- **Forged ALuminum alloy** - Can withstand more than 800 kg pressure, hardness better than casting alloy.
- **Easy setup & replace brake pad.**
- **Colored by anodizing process** - Anti-corrosion, Scratch Resistant and Not fade easily.
- **Thinnest Body** - Inner side thickness 12mm - apply to any kind of bike hubs.

### BRAKE SYSTEM

TRITON



MODEL	BRK-001 Cooling Brake Pad BRK-002 Standard Brake Pad
MATERIAL	Forged aluminum
WEIGHT	185g / per caliper
MAIN BODY COLOR	Optional (Bright Black, Matte Black)
CALIPER LEVER COLOR	Optional (Black, Silver, Red, Purple, Blue, Green, Orange, Brown, Golden...)
FEATURES	Easy to install & replace brake pad

# BRAKE SYSTEM

## CALLISTO-L



MODEL	BRK-003 Cooling Brake Pad BRK-004 Standard Brake Pad
MATERIAL	Forged aluminum
WEIGHT	159g / per caliper
MAIN BODY COLOR	Optional (Bright Black, Matte Black)
CALIPER LEVER COLOR	Optional (Black, Silver, Red, Purple, Blue, Green, Orange, Brown, Golden...)
FEATURES	Caliper Body Lightweight, Brake Force Unattenuated

## CALLISTO-R Mirroring ver.



MODEL	BRK-005 Cooling Brake Pad BRK-006 Standard Brake Pad
MATERIAL	Forged aluminum
WEIGHT	159g / per caliper
MAIN BODY COLOR	Optional (Bright Black, Matte Black)
CALIPER LEVER COLOR	Optional (Black, Silver, Red, Purple, Blue, Green, Orange, Brown, Golden...)
FEATURES	Mirroring design, special design for right side mount

# BRAKE SYSTEM

## BRAKE PADS

MODEL	Standard Pad
PAD MATERIAL	Organic Compound
FEATURES	<ol style="list-style-type: none"> <li>1. Aluminum backing plate - lightweight and improved heat dissipation.</li> <li>2. Suitable for XT, XTR</li> </ol>



MODEL	Cooling Pad
PAD MATERIAL	Semi-Metal
FEATURES	<ol style="list-style-type: none"> <li>1. Aluminum backing plate - lightweight, wave design improved higher heat dissipation.</li> <li>2. Suitable for XT, XTR</li> </ol>

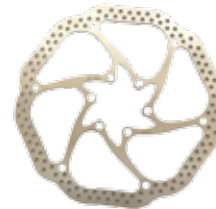


## ROTOR

MODEL	Rotor
MATERIAL	Stainless Steel
FEATURES	Available in different diameters from 140mm to 203mm



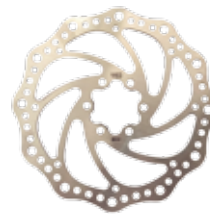
RT-160-E



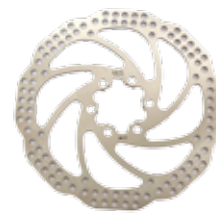
RT-160-U



RT-160-A



RT-160-B



RT-160-L



RT-160-Z

# BRAKE SYSTEM

## Adapter



MODEL	AD-001	AD-002	AD-003
MATERIAL	Aluminum	Aluminum	Aluminum
SPECIFICATION	PM-IS-F160	PM-IS-R160/F180	PM-PM-F203



MODEL	AD-004	AD-005	AD-006
MATERIAL	Aluminum	Aluminum	Aluminum
SPECIFICATION	PM-IS-R180/ F203	PM-PM-F180-1	PM-IS-R203

# BRAKE SYSTEM

## Cable Housing

Brake housing: Outside diameter 5 mm

Shift housing: Outside diameter 4 mm

All color are available for brake and shift housing cable.

### Standard Series



111A 鮮紅 Strong Red  
111B 紅色 Red  
111 洋紅 Magenta  
111D 粉紅 Hot Pink  
111E 腥紅 Scarlet  
111F 螢光粉 Fluorescent Pink  
112A 橙色 Orange  
112B 螢光橙 Fluorescent Orange  
113A 黃色 Yellow



113B 琥珀黃 Amber  
113C 咖啡色 Coffee  
113D 螢光黃 Fluorescent Yellow  
114A 黃綠色 Yellow Green  
114B 亮綠色 Bright Green  
114C 綠色 Green  
114D 螢光綠 Fluorescent Green  
114E 檸檬綠 Lemon Green  
115A 青色 Cyan



115B 藍色 Blue  
115C 深藍 Navy Blue  
116A 紫色 Purple  
117A 白色 White  
117B 銀色 Silver  
117C 灰色 Gray  
118A 黑色 Black  
118B 暗灰色 Dim gray  
118C 珍珠灰 Pearl Gray

### AL-SP Series



341A 紅 Red  
347A 透明 Colorless  
347B 白色 White  
348A 透黑 Transparent Black  
348B 黑色 Black

### KVL Reinforced Series

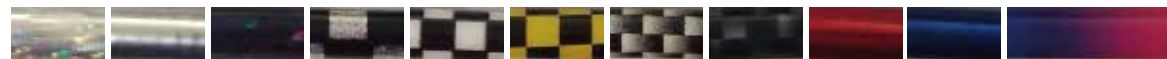


361A 紅色 Red  
361B 粉紅色 Pink  
362A 橙色 Orange  
365A 藍色 Blue  
367A 白色 White  
368A 黑色 Black

### Laser Series

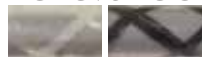


121A 紅鑽 Red Diamond  
123A 亮金 Gold  
123B 金鑽 Yellow Diamond  
124A 綠鑽 Green Diamond  
125A 藍鑽 Blue Diamond  
126A 粉鑽 Pink Diamond  
126B 紫鑽 Purple Diamond  
127A 銀格 Silver Grid  
127B 銀鑽 Silver Diamond



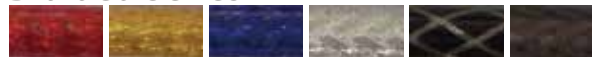
127C 細銀鑽 Slim Sliver Diamond  
127D 亮銀 Silver  
128A 黑鑽 Black Diamond  
129A 黑亮銀棋格 Black & Silver Checkered  
129B 黑白棋格 Black & White Checkered  
129C 黑黃棋格 Black & Yellow Checkered  
129D 密黑白棋格 Dense Black & White Checkered  
129E 密黑銀棋格 Dense Black & Silver Checkered  
121B 亮紅 Red  
125B 亮藍 Blue  
129F 彩虹 Rainbow Gradient

### Reflective Series



177A 白線 White Line  
179A 黑線 Black Line

### Braided Series



131A 紅色 Red  
133A 金色 Gold  
135A 藍色 Blue  
137A 銀色 Silver  
138A 黑色 Black  
138B 透黑 Transparent Black

# BRAKE SYSTEM

## Inner Wire



MODEL	BC-607, BC-611
MATERIAL	Galvanized steel, Stainless Steel
O.D	1.5mm

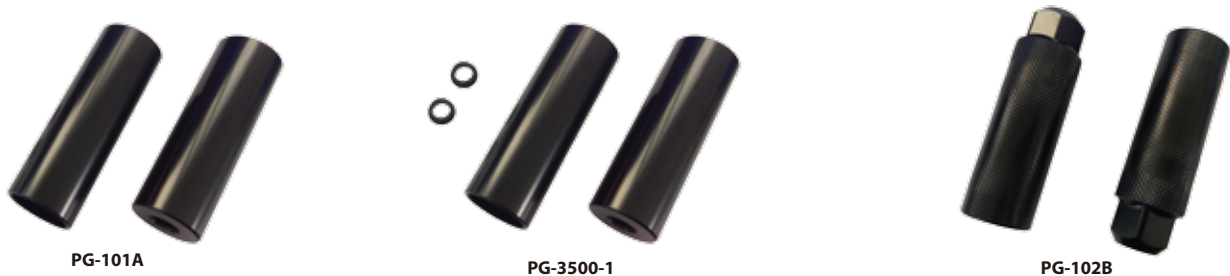


MODEL	SC-404
MATERIAL	Galvanized steel, Stainless Steel
O.D	1.2mm

## Pegs



MODEL	PG-2401	PG-2501	PG-2506, ZY-2506A	PG-5008, PG-5003
MATERIAL	Alloy 6061 T6	Alloy 6061 T6	Alloy 6061 T6	Alloy
SIZE	24mm	25mm	25mm	50mm
LENGTH	75mm	75mm	75mm	110mm
DEMENSIONS	3/8"×26T, 24T	3/8"×26T, 24T	3/8"×26T, 24T	10T, 14T, 26T



MODEL	PG-101A	PG-3500-1	PG-102B
MATERIAL	Steel	Steel	Steel
SIZE	38mm	35mm	32mm
LENGTH	110mm	100mm	100mm
DEMENSIONS	10T, 14T, 26T	10T, 14T	26T



# About COOLRUN WHEEL

## Effect of COOLRUN MODE

### High calorie burn !

It burns up high calories through vibration generated when exercising the whole body like in jump rope.

### Strengthening core muscle !

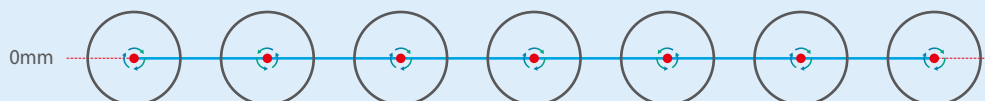
Repeated contraction and relaxation of lower body muscles and waist for balance.

### Enhance your body's rhythm !

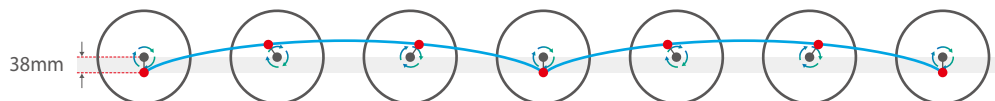
Good for releasing stress and more enjoyable riding~



Level **0**  
General riding



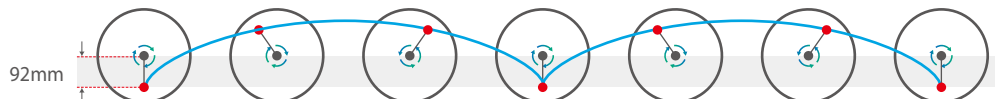
Level **1**



Level **2**



Level **3**



Level **4**



## How to change **COOLRUN GEAR**



01 Turn the wheel so that the control bolt should be not covered by the fork and brake.

Lock the locking device while pulling the brake lever.



03 Insert the connecting handle into the dedicated wrench, and loosen the control bolt in a counterclockwise direction (about 5 cycles).  
- Do not rotate by exerting excessive force.



04 Move the wheel forward or backward to position the red arrow to be situated at the desired level.  
- Position the arrow at the center of the number.



05 After having tightened fully in a clockwise direction, release the lock on the brake.

## What & Why is the **COOLRUN WHEEL**

- 1 Innovative eccentric wheel**  
The world's first dual-purpose wheel for horse riding and general riding!
- 2 An awesome exercise effect**  
You can exercise your entire body!
- 3 Go on adventures**  
More fun in leisure and life!



# COOLRUN Tuning



You can enjoy COOLRUN MODE simply by replacing the general wheel from other manufactures wheel with the COOLRUN WHEEL



## Patent registration

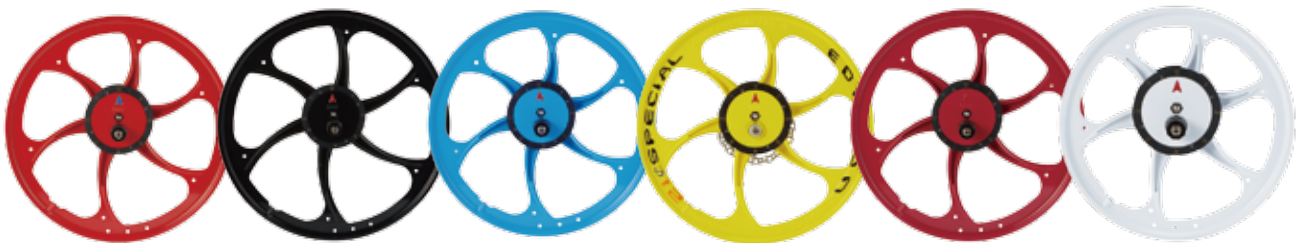
Holds patent registration over 11 key countries around the world.





# Bike PARTS

## COOLRUN Magnesium Rim



TYPE	Front / Rear
SIZE	20" / 24" / 26"
COLOR	<input type="checkbox"/> RED <input type="checkbox"/> BLACK <input type="checkbox"/> BLUE <input type="checkbox"/> YELLOW <input type="checkbox"/> PURPLE <input type="checkbox"/> WHITE

## COOLRUN Wheel



TYPE	Front / Rear
SIZE	20" / 24" / 26"
COLOR	<input type="checkbox"/> RED <input type="checkbox"/> BLACK <input type="checkbox"/> BLUE <input type="checkbox"/> YELLOW <input type="checkbox"/> PURPLE <input type="checkbox"/> WHITE
TIRE	KENDA Hybrid



# Bike PARTS

## Fork

MODEL	CRF-MG30
MATERIAL	Magnesium
SIZE	30"



MODEL	CRF-A
MATERIAL	Aluminum



MODEL	CRF-S
MATERIAL	Steel
SIZE	24" / 28" / 30"



# Bike PARTS

## Handle Bar



COLOR

■ BLACK ■ RED ■ GREEN ■ BLUE ■ PURPLE ■ GOLD ■ ORANGE



# Normal BIKE

## CR-CT Carbon



FRAME	COOLRUN Carbon Frame	
FORK	CRF-G 30"	
REAR SHOCK	DNM AOY 36RC	
DERAILLEUR	Front : None	Rear : 8s
BRAKE SYSTEM	COOLRUN "RED"	
	Front & Rear : Disc Rotor 180' dedicated for COOLRUN, Mechanical Dual Brake	
WHEEL SET	Front & Rear : Adjustable eccentric COOLRUN 26" MG wheel	
TIRE	Front & Rear : KENDA 26"x1.95	
SADDLE	COOLRUN Prostate Protection Saddle	
CRANK	8s 48T Single	
HANDLE BAR	COOLRUN Aluminum Tubing Flat Bar	
STEM	COOLRUN Ø 31.8	

• Specification can be changed for safety and performance.

# Normal BIKE

## CR-FV Folding Mini-vello



FRAME	COOLRUN Folding 20" Steel Frame	
FORK	Steel Rigid Fork	
DERAILLEUR	Front : None	Rear : 8s
BRAKE SYSTEM	COOLRUN "RED"	
	Front & Rear : Disc Rotor 160' dedicated for COOLRUN, Mechanical Dual Brake	
WHEEL SET	Front & Rear : Adjustable eccentric COOLRUN 20" MG wheel	
TIRE	Front & Rear : KENDA 20"x1.95	
SADDLE	COOLRUN Prostate Protection Saddle	
CRANK	7s 48T Single	
HANDLE BAR	Can adjust height (25cm~50cm)	
STEM	Folding type handle stem where the safety lever has been applied	

- Specification can be changed for safety and performance.



# Normal BIKE

## CR-HS20 Hybrid



FRAME	COOLRUN Steel Frame	
FORK	CRF-MG 30"	
DERAILLEUR	Front : None	Rear : 8s
BRAKE SYSTEM	COOLRUN "RED"	
	Front & Rear : Disc Rotor 180' dedicated for COOLRUN, Mechanical Dual Brake	
WHEELSET	Front & Rear : Adjustable eccentric COOLRUN 26" MG wheel	
TIRE	Front & Rear : KENDA 26"x1.95	
SADDLE	COOLRUN Prostate Protection Saddle	
CRANK	48T Single	
HANDLE BAR	COOLRUN Aluminum Tubing Flat Bar	
STEM	Aluminum Stem	

- Specification can be changed for safety and performance.

# Normal BIKE

CR-MT20



FRAME	COOLRUN Steel Frame	
FORK	Steel Rigid Fork	
DERAILLEUR	Front : None	Rear : 8s
BRAKE SYSTEM	COOLRUN "RED"	
	Front & Rear : Disc Rotor 160' dedicated for COOLRUN, Mechanical Dual Brake	
WHEELSET	Front & Rear : Adjustable eccentric COOLRUN 20" MG wheel	
TIRE	Front & Rear : KENDA 20"x1.95	
SADDLE	COOLRUN Prostate Protection Saddle	
CRANK	8s 48T Single	
HANDLE BAR	COOLRUN Aluminum Tubing Flat Bar	
STEM	Aluminum Stem	

- Specification can be changed for safety and performance.



# Electric BIKE

## CR-1 Electric



FRAME	COOLRUN Folding Aluminum Alloy Electric	
FORK	CRF-MG 30" (option : CRF-A, refer to page 7)	
REAR SHOCK	DNM Torch DV-22AR	
DERAILLEUR	Front : SHIMANO Acera 3s	Rear : SHIMANO Acera 8s
BRAKE SYSTEM	COOLRUN "RED" Front & Rear : Disc Rotor 180' dedicated for COOLRUN, Mechanical Dual Brake	
WHEELSET	Front & Rear : Adjustable eccentric COOLRUN26" MG wheel	
TIRE	Front & Rear : KENDA 26"x1.95	
SADDLE	COOLRUN Prostate Protection Saddle	
CRANK	170 22/34/42T	
HANDLE BAR	COOLRUN Tubing Bar	
PAS	Economical Powered 5 Level Speed Assistant	
MOTOR	300W BLDC	
BATTERY	36V, 8.7Ah Samsung Li-ion	
SPEED	25km	
MILEAGE	90km ~ (PAS applied)	
CHARGING TIME	3 ~ 4 hours	
CONTROLLER	King-METER SW-LCD	

- Specification can be changed for safety and performance.



# TANDEM

## CR-HC2P



FRAME	Aluminum 6001	
FORK	CRF-MG 30"	
DERAILLEUR	Front : SHIMANO Tourney 3s	Rear : SHIMANO Altus 8s
BRAKE SYSTEM	COOLRUN "RED"	
	Front & Rear : Disc Rotor 180' dedicated for COOLRUN, Mechanical Dual Brake	
WHEEL SET	Front : Adjustable eccentric COOLRUN 26" MG wheel	Rear : Adjustable eccentric COOLRUN 24" MG wheel
TIRE	Front : KENDA 26"x1.95	Rear : KENDA 24"x1.95
SADDLE	COOLRUN Comfort Saddle	
HANDLE BAR	Aluminum Flat Bar	
STEM	Aluminum Ø 31.8	

- Specification can be changed for safety and performance.



# TANDEM

## CR-SB Steel Bike for Couple



FRAME	COOLRUN Steel Frame
FORK	Steel Rigid Fork
GEAR	Single
BRAKE SYSTEM	COOLRUN "RED" Front & Rear : Disc Rotor 160' dedicated for COOLRUN, Mechanical Dual Brake
WHEELSET	Front & Rear : Adjustable eccentric COOLRUN 26" MG wheel
TIRE	Front & Rear : KENDA 26"x1.95
SADDLE	Wide Spring Saddle
HANDLE BAR	Steel Riser Bar
SEAT POST	Steel Seat Post

- Specification can be changed for safety and performance.

# TANDEM

## CR2P-MS Stroller Bike



FRAME	COOLRUN MS Steel Frame
FORK	Steel Rigid Fork
GEAR	Single
BRAKE SYSTEM	COOLRUN "RED" Front & Rear : Disc Rotor 160' dedicated for COOLRUN, Mechanical Dual Brake
WHEELSET	Front & Rear : Adjustable eccentric COOLRUN 20" MG wheel
TIRE	Front & Rear : KENDA 20"x1.95
SADDLE	Spring & Protector Saddle
HANDLE BAR	Steel Classic Bar
SEAT POST	Steel Seat Post

- Specification can be changed for safety and performance.



# KICKBIKE

QB\_F26CR20C



FRAME	COOLRUN Folding Aluminum Alloy	
FORK	CRF-MG 30"	
BRAKE SYSTEM	COOLRUN <b>"RED"</b>	
	Front : Disc Rotor 180' dedicated for COOLRUN, Rear: Disc Rotor 160' dedicated for COOLRUN, Mechanical Dual Brake	
WHEELSET	Front : Adjustable eccentric COOLRUN 26" MG wheel	Rear : Adjustable eccentric COOLRUN 20" MG wheel
TIRE	Front : KENDA 26"x1.95	Rear : KENDA 20"x1.95
HANDLE BAR	COOLRUN Aluminum Tubing Flat Bar	
FRAME COLOR	Optional (Black, Red, Blue, White etc)	
WHEEL COLOR	Optional (Black, Red, Blue, White etc)	

- Specification can be changed for safety and performance.

# KICKBIKE

QB\_F26CRN



FRAME	COOLRUN Folding Aluminum Alloy	
FORK	CRF-MG 30"	
BRAKE	COOLRUN <b>"RED"</b>	
	Front : Disc Rotor 180' dedicated for COOLRUN, Rear : Disc Rotor 160' dedicated for COOLRUN, Mechanical Dual Brake	
WHEELSET	Front : Adjustable eccentric COOLRUN 26" MG wheel	Rear : Normal Spoke wheel
TIRE	Front : KENDA 26"x1.95	Rear : KENDA 20"x1.95
HANDLE BAR	COOLRUN Aluminum Tubing Flat Bar	
FRAME COLOR	Optional (Black, Red, Blue, White etc)	
FRONT WHEEL COLOR	Optional (Black, Red, Blue, White etc)	

- Specification can be changed for safety and performance.



# Electric KICKBIKE

QB\_F26CR20E



FRAME	COOLRUN Folding Aluminum Alloy	
FORK	CRF-MG 30"	
BRAKE	COOLRUN "RED"	
	Front : Disc Rotor 180' dedicated for COOLRUN, Rear : Disc Rotor 160' dedicated for COOLRUN, Mechanical Dual Brake	
WHEELSET	Front : Adjustable eccentric COOLRUN 26" MG wheel	Rear : Hub Motor wheel
TIRE	Front : KENDA 26"x1.95	Rear : KENDA 20"x1.95
HANDLE BAR	COOLRUN Aluminum Tubing Flat Bar	
MOTOR	Bafang BLDC 350W	
BATTERY	36V, 10A	
SPEED	25km	
MILEAGE	40km	
CHARGING TIME	4hours	
CONTROLLER	High class integrated throttle type LCD of WUXING BICYCLE CO.,LTD.	
FRAME COLOR	Optional (Black, Red, Blue, White etc)	
FRONT WHEEL COLOR	Optional (Black, Red, Blue, White etc)	

- Specification can be changed for safety and performance.

# Electric KICKBIKE

QB\_F26CR20E\_V2



FRAME	COOLRUN Folding Aluminum Alloy	
FORK	CRF-MG 30"	
BRAKE	COOLRUN "RED"	
	Front : Disc Rotor 180' dedicated for COOLRUN, Rear : Disc Rotor 160' dedicated for COOLRUN, Mechanical Dual Brake	
WHEELSET	Front : Adjustable eccentric COOLRUN 26" MG wheel	Rear : Hub Motor wheel
TIRE	Front : KENDA 26"x1.95	Rear : KENDA 20"x1.95
HANDLE BAR	COOLRUN Aluminum Tubing Flat Bar	
MOTOR	Bafang BLDC 350W	
BATTERY	36V, 10A	
SPEED	25km	
MILEAGE	40km	
CHARGING TIME	4hours	
CONTROLLER	High class integrated throttle type LCD of WUXING BICYCLE CO.,LTD.	
FRAME COLOR	Optional (Black, Red, Blue, White etc)	
FRONT WHEEL COLOR	Optional (Black, Red, Blue, White etc)	

- Specification can be changed for safety and performance.